



THE COLLEGE OF
OPTOMETRISTS

Stage Two

Overarching case scenario 4

AGE AND GENDER 69yrs, Male

ETHNIC BACKGROUND Caucasian

OCCUPATION AND HOBBIES Retired Bus Driver, Hobbies: Watching TV, Metalwork (small sculptures and plaques). Driver.

PRESENTING SYMPTOMS AND HISTORY Distance vision mostly OK, but notices haloes around lights at night. Reading "could be better". Advised by GP to have regular eye examinations every year, does not know why. No family history of ocular disease.

Wears bifocal spectacles, prescribed for the first time at last examination and dislikes the 'line '. Drives. Has a previous history of "piece of metal in the eye" and this was removed at HES last year.

GENERAL HEALTH AND MEDICATION Has a heart condition and goes to hospital every six months for checkup. Takes bendrofluorazide, half an aspirin and amiodarone.

PRESENT Rx, CENTRATION AND ACUITIES Plastic D28 Bifocals OC's 69/64 mm

R +1.75 / -2.75 x 90 6/9-2 Near Add +2.50 N6

L +2.75 / -2.50 x 100 6/9-2 Near Add +2.50 N6

PD/NCD 69/64 mm

VISION R 6/24 N24 L 6/24 N24

PINHOLE VISION R 6/9 L 6/9

REFRACTION

R +2.25 / -2.50 x 90 Add +2.50

L +3.25 / -2.50 x 100 Add +2.50

VA Distance R 6/7.5+2 L 6/7.5+2 Near R N5 L N5

ACCOMMODATION Depth of Field only

BINOCULAR STATUS

Distance NMD

Near 4prism XOP No FD

MOTILITY Full with no discomfort

CONVERGENCE 10cm

PUPIL REACTIONS D,N,C full R & L. No RAPD

FUNDUS EXAMINATION See attached

FIELDS See attached

IOP R 10mmHg L 11mmHg @ 2.00pm Perkins

EXTERNAL EYE EXAMINATION : See attached

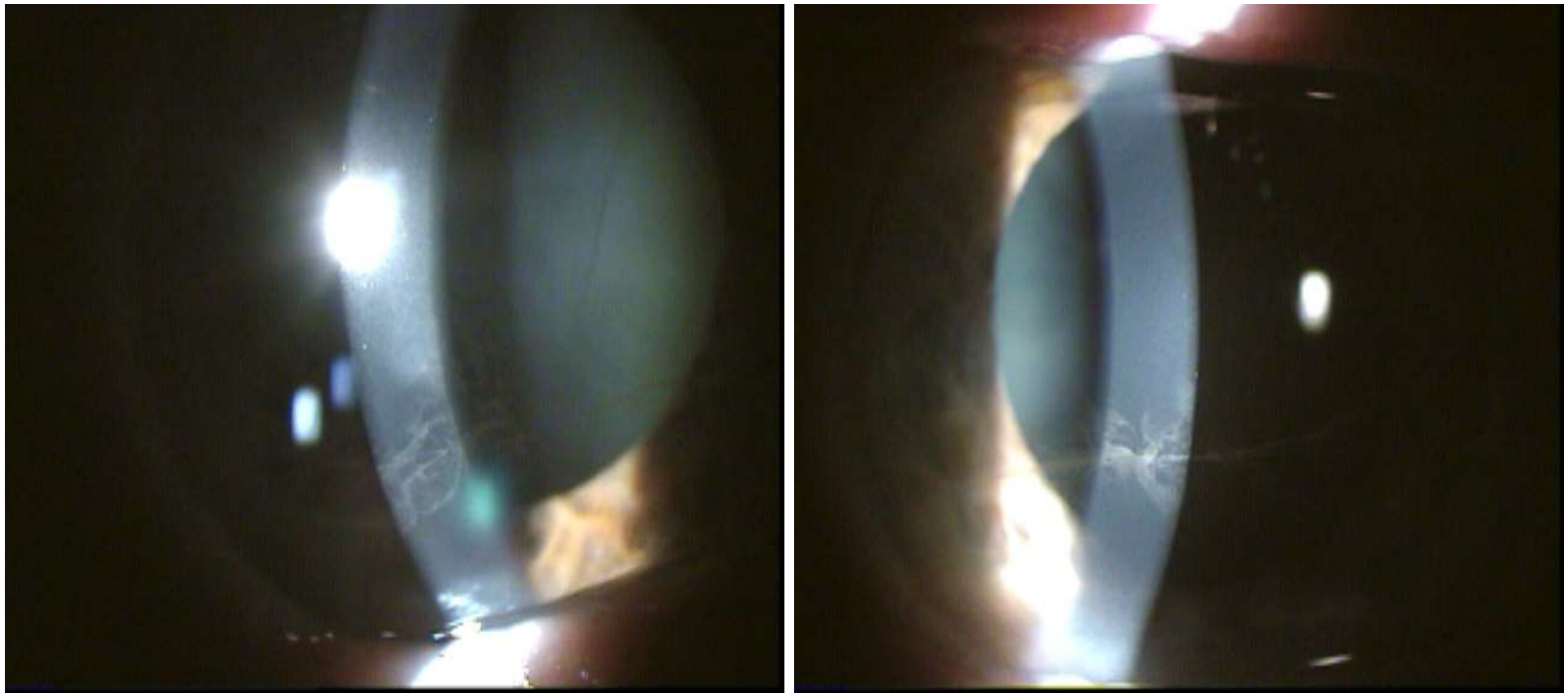
KERATOMETRY Consistent readings could not be obtained

COLOUR VISION See attached

Fundus Image



External Eyes – Slit lamp

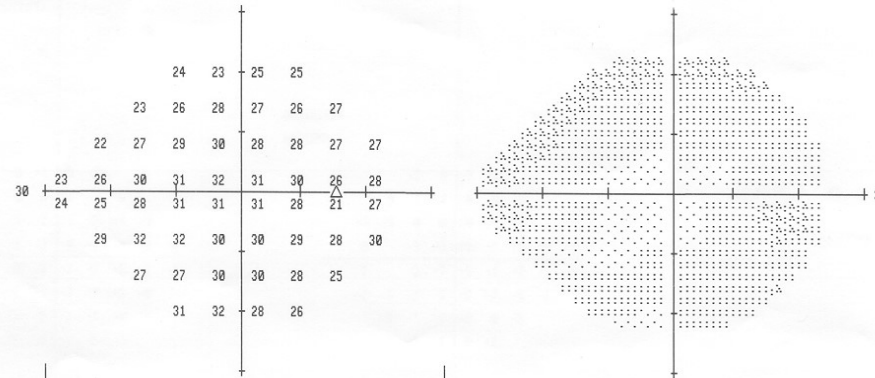


Field plot

CENTRAL 24-2 THRESHOLD TEST

FIXATION MONITOR: BLINDSPOT
 FIXATION TARGET: CENTRAL
 FIXATION LOSSES: 8/11
 FALSE POS ERRORS: 16 %
 FALSE NEG ERRORS: 11 %
 TEST DURATION: 03:55
 FOVER: OFF

STIMULUS: III, WHITE
 BACKGROUND: 31.5 ASB
 STRATEGY: SITA-FAST

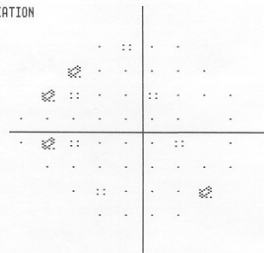


	-3	-4	-2	-1				
	-6	-3	-2	-2	-1			
	-6	-3	-2	-1	-3	-2	-3	-1
-3	-3	-1	-1	0	-1	-1	-1	
-3	-5	-3	-2	-2	-1	-3	-3	
	0	1	0	-2	-2	-2	-2	0
	-2	-3	-1	-1	-3	-5		
	2	2	-2	-3				

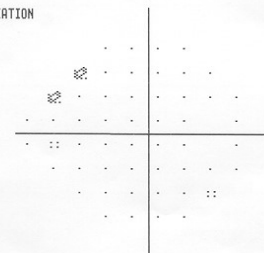
		-2	-4	-1	-1				
		-5	-3	-1	-1	-2	-1		
		-6	-3	-1	-1	-3	-2	-2	-1
-3	-3	-1	0	0	0	-1	-1		
-2	-4	-2	-1	-1	0	-3	-3		
	0	1	0	-2	-1	-2	-2	0	
	-2	-3	0	-1	-3	-5			
	2	3	-1	-3					

MD -1.69 DB P < 5%
 PSD 1.66 DB

TOTAL
 DEVIATION



PATTERN
 DEVIATION



:: < 5%
 ☒ < 2%
 ☒ < 1%
 ■ < 0.5%

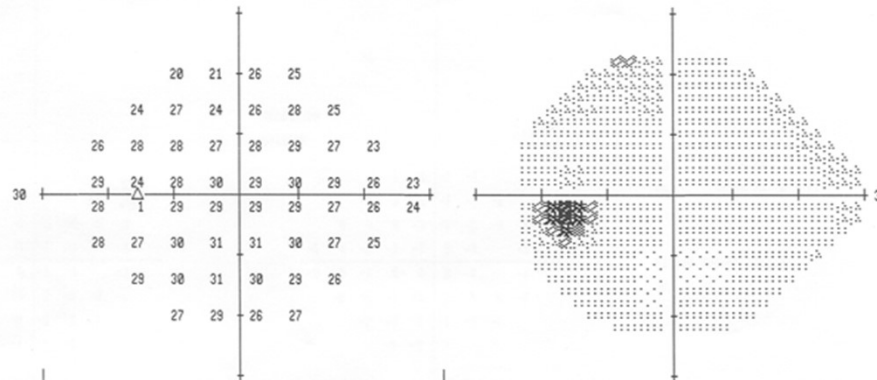
Field plot

CENTRAL 24-2 THRESHOLD TEST

FIXATION MONITOR: BLINDSPOT
 FIXATION TARGET: CENTRAL
 FIXATION LOSSES: 1/11
 FALSE POS ERRORS: 0 %
 FALSE NEG ERRORS: 0 %
 TEST DURATION: 03:59

STIMULUS: III, WHITE
 BACKGROUND: 31.5 ASB
 STRATEGY: SITRA-FAST

FOVER: OFF



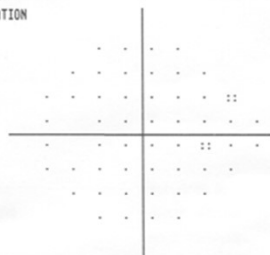
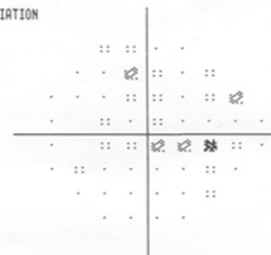
TOTAL DEVIATION

	-6	-6	-1	-2					
	-4	-2	-5	-3	-1	-4			
	-2	-1	-2	-4	-3	-1	-3	-6	
	0	-3	-2	-3	-2	-2	-3	-3	
	-1	-3	-3	-4	-3	-4	-3	-2	
	-2	-3	-1	-1	-1	-2	-4	-4	
	-1	0	0	-1	-1	-4			
	-3	-1	-3	-2					

PATTERN DEVIATION

	-5	-5	0	-1					
	-3	-1	-4	-2	0	-3			
	-1	-1	-1	-3	-2	-1	-2	-5	
	1	-3	-1	-2	-1	-1	-2	-2	
	0	-2	-2	-3	-2	-3	-2	-2	
	-1	-2	0	0	0	-1	-3	-3	
	0	1	1	0	0	-3			
	-2	0	-2	-1					

MD -2.45 DB P < 5%
 PSD 1.42 DB



•• < 5%
 ☼ < 2%
 ☼ < 1%
 ■ < 0.5%

Colour Vision (Binocular)

ISHIHARA TEST SCORE SHEET (30-PLATE EDITION, 1979)

NAME: _____ DATE: _____

PLATE	SCORE	NORMAL	DEFICIENT	TOTAL CB/ WEAK	ANOPIA	PROT ANOMALY	ANOPIA	DEUTER ANOMALY
1	12	12	12	12	12	12	12	12
2	8	8	3	-				
3	6	6	5	-				
4	29	29	70	-				
5	57	57	35	-				
6	5	5	2	-				
7	3	3	5	-				
8	15	15	17	-				
9	74	74	21	-				
10	2	2	-/X					
11	6	6	-/X					
12	97	97	-/X					
13	45	45	-/X					
14	5	5	-/X					
15	7	7	-/X					
16	18	16	-/X					
17	73	73	-/X					
18	-	-	5	-				
19	-	-	2	-				
20	-	-	45	-				
21	-	-	73	-				
22	26	26			6	(2)6	2	2(6)
23	42	42			2	(4)2	4	4(2)
24	35	35			5	(3)5	3	3(5)
25	96	96			6	(9)6	9	9(6)

NOTES: - no numeral read X incorrectly read A(B) A clearer than B